

Public Commission

Lothar Götz

Dance Diagonal

Until May 2020

Gallery Façade

Free

Lothar Götz has transformed Towner into a large-scale, geometric mural encompassing the entire gallery exterior. Götz, a German artist based in the UK, was chosen from over 60 artists through an open call for the Brewers Towner Commission, a painted commission to mark Towner's 10th anniversary in the current building.

Drawing on the gallery's architecture, angles, curves and recesses, Götz has created his largest painting to date, a colourful piece which also marks the first time that an artist has been commissioned to create an artwork for Towner's exterior at scale.

Share your pictures with us of this major outdoor artwork using #DanceDiagonal and #BrewersTownerCommission

Sponsored by Brewers Decorator Centre

Brewers
DECORATOR CENTRES



Lothar Götz, *Dance Diagonal*, 2019. Photos: Jim Stephenson

In the Galleries

David Nash

200 Seasons

29 September 2019 - 2 February 2020
Studios 1 & 2, Galleries 2 & 3
Free

One of the largest and most ambitious exhibitions of David Nash's work ever mounted, *200 Seasons* spans the artist's career from the late 1960s to the present day and explores his unique contribution to British sculpture and the international Land Art movement.

The exhibition reflects the artist's long relationship with Wales, in particular Capel Rhiw, Blaenau Ffestiniog, his home and studio for more than 50 years.

200 Seasons, will be installed across Towner's major gallery spaces and features key sculptures, films and drawings.

Art School
Pop-up Sculpture Tent
Saturday 28 September, 11am - 4pm
Manor Gardens
Free for all ages

A pop-up sculpture making space will give you the opportunity to explore and experience making sculpture inspired by David Nash's, *Eighteen Thousand Tides*, commissioned by Towner in 1996 and on view in Manor Gardens. The Sculpture Tent is run by the Royal Society of Sculptors in collaboration with Art UK and Towner.

See towner.gallery/halfterm for further events planned for the October 2019 half-term.



David Nash, *Ancient Table*, 1990. Photo: Noel Brown

In Conversation: David Nash
Sunday 29 September, 12 Noon
Tickets £5 / £4 members & conc.

Join Sara Cooper, Towner's Head of Collections and Nicholas Thornton, Head of Fine Art at National Museum Wales, in conversation with David Nash.

In the Galleries

Caroline Lucas curates the Towner Collection

23 November 2019 - 10 May 2020

Gallery 1

Free

Caroline Lucas is the Green Party's first MP, representing Brighton Pavilion and has also served as an MEP and as Leader and Co-Leader of the Green Party. Caroline is an active campaigner on a range of issues and has consistently been voted the UK's most ethical politician. She has been patron of various arts projects over the years, and she currently supports Kollektiv Gallery, ONCA Gallery and Firecracker Theatre Company. This Autumn, Caroline takes on a new role: curator of Towner's latest Collection exhibition.

Selecting from the 5000 works in Towner's Collection, Caroline's choices reflect and resonate with her passions and interests, from her environmental work, issues of climate change and its effects on our landscape, to her love of living in Sussex.

Showing at the same time as David Nash's *200 Seasons*, there will be a dialogue for visitors between the two exhibitions through a shared environmental interest.



Tirzah Garwood, *Hornet with Wild Roses*, Towner Collection, 1950. © Estate of Tirzah Ravilious. All rights reserved, DACS 2019.

In the Galleries



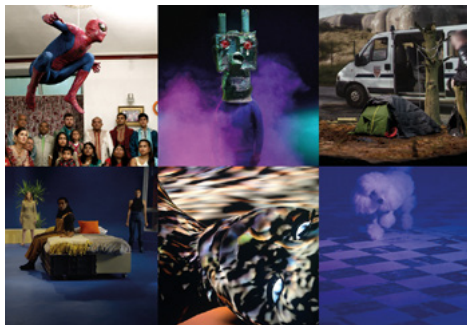
Kathleen Walne, *Reclining Boy*, 1935. © The Artist's Estate

TEN Towner Curates the Collection

Until 10 November 2019
Gallery 1
Free

To celebrate Towner's 10th anniversary in the current building, a group from Towner's team who have worked and volunteered at the gallery since 2009 have curated an exhibition of works from the Collection that have been acquired in the last ten years.

TEN includes an exciting range of works, that includes painting, print and sculpture, by artists such as Grayson Perry, Tom Hammick, John Piper, Ivan Navarro and Kathleen Walne.



Courtesy of Film London Jarman Award.

Film London Jarman Award 2019 Tour

22 November - 27 November
Towner Auditorium
Free

Discover works that explore new digital practices, experimental animation and fresh approaches to analogue filmmaking in this screening of cutting-edge artists' films in the Towner Auditorium. Shortlisted for this year's Film London Jarman Award the six artists present innovative, imaginative and immersive works that each address important topics faced by contemporary society. Works by Cécile B Evans, Beatrice Gibson, Mikhail Karikis, Hetain Patel, Imran Perretta and Rehana Zaman will be screened daily. See website for times of screenings.

In Conversation: Cécile B. Evans
Friday 22 November, 5pm
Free, booking required

Launching the season of screenings, join the artist in conversation with Towner Curator Noelle Collins.

Stay Curious

Ravilious Gallery and Collection Library

Towner has one of the largest public collections of work by Eric Ravilious (1903 - 1942) as well as extensive archive materials. The Ravilious Gallery and Collection Library is a dedicated space presenting changing exhibitions and offering new perspectives on the works of the artist. Supported by Eastbourne Arts Circle and open during gallery opening hours. Closed 12 November - 22 November 2019 inclusive due to gallery installation.

Allan Grainger *Downland Gloaming*

17 September - 10 November 2019

Night walks over the old chalk paths and byways of the Downs are the inspiration for Allan Grainger in this series of photographs on display this autumn in the Collection Library.

Perspectives on... The Lyons Lithographs

22 September, 11am
£7 / £6 conc. & members

Commissioned by the catering giant J. Lyons and Co. to brighten the drab austerity of post-war tea houses, the collection of lithographs by leading artists of the day, including Bawden, Piper and Ardizzone, continues to enthral.

Learn more about the technical process and social context behind the series, an ideal add-on for anyone visiting Towner for the Ink, Paper & Print Fair on the same day.



Towner Collection, 2019. Photo: Eva Eastman

Art Store Tours

1, 15, 28 September
13, 27 October
10, 24 November
8, 22 December

Go behind the scenes and enjoy a fascinating introduction to our Collection. From the original Victorian bequest to our more recent moving image and sculptural acquisitions. Private art store tours at the time of your choice are also available.

Open Ended

3 September
1 October
5 November
3 December
£3 including refreshments (free for carers)

A monthly exploration of Towner's Collection and exhibitions to support those with memory loss.

Eastbourne Arts Circle Talks

For more information on what our friends at Eastbourne Arts Circle have planned this season in their popular series of talks and events at Towner, visit www.eastbourneartscircle.org.uk

Join In



Charismatic Megafauna, Towner, 2019. Photo: Rob Harris

Thursday Lates

Eastbourne is coming ALIVE on Thursday nights this season. Join us on the first Thursday of every month as we throw open our doors until 9pm for a twilight gallery experience alongside talks, live music and networking. See our website for more details or #SouthEastCreatives



Powell & Pressburger, *I Know Where I'm Going!*, film still, 1945.

Eastbourne & Lewes Walking Festival 2019

Eastbourne & Lewes Walking Festival takes place from Friday 20 September - Sunday 29 September 2019. This year, we are running a series of talks, events and screenings that explore the relationship between art, walking and the landscape. Learn more at towner.gallery/walkingfest



Joanna Hogg, *The Souvenir*, film still, 2019.

Towner Cinema

As the nights draw in for autumn, why not make a trip to the Towner Cinema? This season's special screenings include a new partnership with Eastbourne Film Society for a monthly documentary screening, a collaboration with Eastbourne and Lewes Walking Festival, and a celebration of Black History Month. There are also plenty of new releases, plus children's and family screenings to enjoy. Towner's Cinema Bar is open 45 minutes before every screening - the perfect spot to meet before a film.

Towner Café

Settle down in the café for break during your visit. A menu of hot and cold drinks, brunch, lunch, vegan and veggie options and sweet treats is available. Open during gallery opening hours.

Shop

Take home gifts, books, prints, artists editions and stationery influenced by our Collection and exhibitions, or shop online at towner.gallery/shop

Your Visit

Opening times

Tuesday - Sunday 10.00am - 5.00pm
Bank Holiday Mondays 10.00am - 5.00pm

Towner will be closed from Monday 23 - Thursday 26 December 2019 inclusive and Wednesday 1 January 2020 for the festive season.

Free admission
+44 (0) 1323 434 670
townereastbourne.org.uk

Getting Here

Towner Art Gallery, Devonshire Quarter,
College Road, Eastbourne BN21 4JJ

We encourage environmentally friendly transport options. Secure bike racks are available and we are 10 minutes walk from Eastbourne train station.

Visit towner.gallery/carfree or contact us for more information. Direct trains to Eastbourne from London (1hr 25 mins), Brighton (35 mins) and from across the South East. The 3 (local service) and 12A (Brighton) buses both stop near the Winter Garden Theatre on Carlisle Road. For cars, College Road car park is pay and display and has designated spaces. We have drop off bays for blue badge holders at the front of the building.

Membership

Support our work and enjoy invitations to curator led private views, free entry to ticketed exhibitions, and discounts for talks and special events as well as in our café and shop. Join now at towner.gallery/members

Venue Hire

Our spaces, including the Towner Auditorium, are available to hire for daytime and evening events. To find out more, call 01323 434679 or email roomhire@townereastbourne.org.uk

Booking

Unless otherwise stated, we recommend booking tickets in advance for films and events at townereastbourne.org.uk or by calling 01323 434670 or at the Welcome Desk. All talks last one hour unless otherwise stated. Event info is correct at time of going to print, check our website and social media for up to date information.

Accessibility

We have a lift to each floor and a wheelchair can be provided. See our website or contact us to discuss specific needs. Towner supports the I-GO Access All Areas scheme.

Conservation Services

Undertaken by our fully accredited conservator Corinne Farmer, ACR.

To book a free consultation email corinne.farmer@townereastbourne.org.uk

Join our Conversation

Join our mailing list or email us at towner@townereastbourne.org.uk

   @townergallery @townerlearning

Front Cover image: David Nash, *Family Tree 1967-94* (detail, 1994). Courtesy of the artist.

Printed using vegetable based inks from environmentally friendly producers by our FSC and ISO 14001 accredited print partner.

Thanks to Devonshire Hotel for their ongoing support.