



towner
art gallery

September 2018 – January 2019

townereastbourne.org.uk

[f](#) [t](#) [@](#) @townergallery

The Everyday and Extraordinary

An Arts Council Collection National Partners Exhibition

29 September – 6 January 2019

Gallery 1, Free

The Everyday and Extraordinary is an exhibition exploring the found object in modern and contemporary art. With work by over fifty international artists, it is a rich, playful and immersive celebration of the physicality of the object; a cabinet of curiosities that spills out of Towner's first floor gallery and into the public areas beyond. Selected from the Arts Council Collection and including works from the New Art Gallery Walsall and Towner's Collection, the exhibition looks at the object as material, inspiration and subject in sculpture, painting, print, photography and animation from the last seven decades.

In 1913, Duchamp used a found object in his work and introduced the term 'ready-made' to art. Whether modified, recontextualised or left unchanged, found objects have had an enduring impact on artistic practice, with artists appropriating and transforming objects in many ways to communicate particular ideas or concepts.

The Everyday and Extraordinary is conceived by Birmingham Museums Trust, in partnership with Towner Art Gallery as part of the Arts Council Collection National Partners Programme 2016-19.

Artist Talk: Hermione Allsopp

Sat 3 Nov / 11.00am / £5 (£4 conc. & members)
Sussex-based *The Everyday and Extraordinary* artist Hermione Allsopp discusses her work and practice in the context of the exhibition's themes.

Curator's Walk and Talk

Thursdays: 4 Oct and 22 Nov / 1.00pm / Free
Join one of Towner's curatorial team for an informal tour of the exhibition.



artscouncilcollection.org.uk



Left: Tony Cragg, *New Stones, Newton's Tones*, 1978. Arts Council Collection, Southbank Centre, London. © The artist. Image courtesy Studio Cragg

Simon Ling

13 October – 27 January 2019
Gallery 2, Free

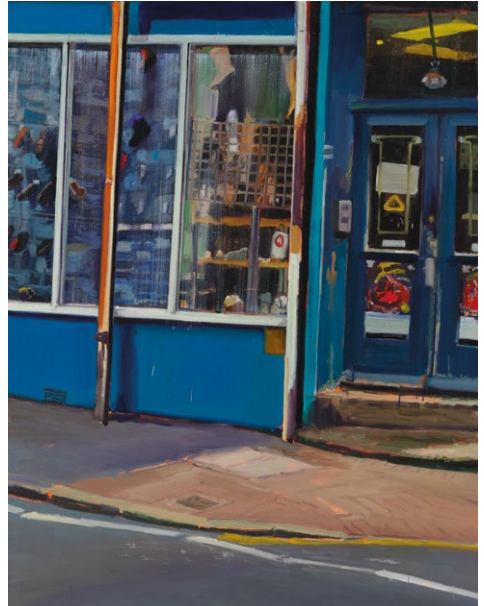
Towner presents an exhibition of new and recent works by Simon Ling, the artist's first solo presentation in a UK public institution.

Simon Ling's paintings draw our attention to the way our experience of the world is created through a sustained attentiveness to how we look at it. His paintings are generally made both 'en-plein air', where his subject matter is found in nondescript urban or rural landscapes, or in his studio where he constructs tableaux of everyday objects. Across all his paintings, as in his most recent work – a series of paintings made from observing an arrangement of logs – we see an intense engagement with perception and the painting process where his concern is to register an emotional equivalence of the visual world accessed and described through intense scrutiny. These paintings emphasise not just what an object looks like or what its material qualities might be, but the dynamic process of seeing, remembering and the act of painting.

Artist Talk: Simon Ling

Sat 13 Oct / 2.00pm / £5 (£4 conc. & members)

Simon Ling discusses his exhibition and the ideas and processes behind his work.



Above: Simon Ling, *Untitled*, 2014. Photo: Marcus Leith. Courtesy greengrassi, London
Right: Hannah Perry, *Rage Fluids* (Künstlerhaus, Halle für Kunst & Medien, Graz, 2018) © Markus Krottendorfer

Hannah Perry

GUSH

10 November – 27 January 2019

Gallery 3, Free

Featuring large-scale dynamic sound sculpture, film and wall-based works, *GUSH* is a candid and personal exploration of mental and emotional health in our contemporary, hyper-networked society by British artist Hannah Perry in her first major solo exhibition in the UK outside London.

Central to the exhibition is an immersive 360° film that surrounds viewers with the contorted, continuously shifting movement of bodies. The film's voiceover reflects on the altered states of the self, including the impact trauma and grief can have on our physical and mental state.

Extending out from this film is a pulsating audio sculpture incorporating stretched car body wrap and subwoofer speakers, enabling sound frequencies to create distorted patterns upon the mirrored surface of the sculpture, altering the viewer's reflected self and surroundings.

Further new works include a hydraulic sculpture that suggests moments of violence, tenderness and intimacy through mechanised interaction, while in new wall-based works, Perry combines her distinctive silk screen printing technique with digital photographs, car lacquer and painting.

Hannah Perry: GUSH is conceived by Somerset House, in partnership with Towner Art Gallery.



Exhibition Launch Event

Sat 10 Nov / 6.00pm



Film London Jarman Award 2018

13 – 28 October
Gallery 3, Free

Larry Achiampong & David Blandy,
Jasmina Cibic, Lawrence Lek,
Daria Martin, Hardeep Pandhal
and Margaret Salmon



This exhibition brings together six artists at the forefront of experimentation in filmmaking – Larry Achiampong & David Blandy, Jasmina Cibic, Lawrence Lek, Daria Martin, Hardeep Pandhal and Margaret Salmon – who are nominated for this year's Film London Jarman Award. Inspired by visionary filmmaker Derek Jarman, the Award recognises and supports artists working with moving image. The selection from this year's shortlist once again illustrates the spirit of imagination and inventiveness within the medium, with works that explore both new practices in relation to digital image making and fresh approaches to traditional filmmaking.



**Artists' Moving
Image Network**

LONDON

Above: *Finding Fanon Part Three*, Larry Achiampong & David Blandy, 2016-17; supported by Arts Council England and Wysing Arts Centre. Image: Claire Barrett

Ravilious Room

29 September – 6 January 2019*
Free



Artist and designer Eric Ravilious is renowned for some of the 20th Century's most iconic depictions of the Sussex landscape. Since the 1930s Towner has developed one of the largest public collections of Ravilious' work as well as extensive archive materials. Our dedicated Ravilious Room displays works by Ravilious complimented by those of his contemporaries, Edward Bawden, Tizrah Garwood, Enid Marx, Douglas Percy Bliss and Peggy Angus. It also features Towner's recent acquisition *Beachy Head*, 1939 as well as a large selection of Ravilious' ceramic designs for Wedgwood.

Supported by **Eastbourne Arts Circle**

**Eastbourne
Arts Circle** 

Eastbourne Arts Circle Talks

For dates and more information on these popular talks please see eastbourneartscircle.org.uk

*Please note the Ravilious Room is closed from 18 – 28 September

Above: Eric Ravilious, *Beachy Head*, 1939, Towner Collection. Purchased with the assistance of the Art Fund, National Heritage Memorial Fund, the Arts Council England/Victoria and Albert Museum Purchase Grant Fund, The Monument Trust, and Eastbourne Arts Circle

Children and Young People

Arts Award Explore Home Education Group

Tuesdays: 2 Oct – 27 Nov + Celebration
Exhibition 11 Dec / 2.00pm–3.30pm /
Suggested contribution £5 per week /
Open to children aged 7–11 years only
A new club specially designed for residents of Eastbourne who home-educate, led by local artist Georgina Leonard.

Arts Award Discover After School Club

Wednesdays: 31 Oct – 28 Nov + Celebration
Exhibition 12 Dec / 3.45pm–5.15pm /
Suggested contribution £5 per week /
Open to children aged 8-11 years who haven't already attended an after school club at Towner
In our second after-school club with artist duo FotoFonty, we'll be exploring ideas and themes in *The Everyday and Extraordinary*.

Fuse Box

Daily during gallery opening hours / Free /
Open to all
Our creative learning space, encouraging you to explore themes and ideas in our current exhibitions.

Half-Term: Exploring Senses Residency

We're excited to be working with artist collective Exploring Senses. Responding to *The Everyday and Extraordinary* we invite you to turn ordinary materials into out-of-the ordinary objects. More information can be found at townereastbourne.org/halfterm
Tue 23 Oct: Toy Hacking
Wed 24 Oct: 3D Pens
Thu 25 Oct: Digital Cardboard Crafting
Fri 26 Oct: Talking Pictures
Sat 27 Oct: Toy Hacking

Christmas Party

Sunday 9 December / 2.00pm–5.00pm / £4 /
For kids aged 0–97
TotRockinBeats and Towner join forces to bring you a family-friendly rave.

Schools

Bourne Primary After School Club

Thursdays: 4 Oct – 15 Nov + Celebration
Exhibition 29 Nov / 1.15pm–3.15pm / Free /
Open to Year 4 Bourne Primary school pupils
Developed in partnership with creative writing agency Little Green Pig, explore ideas in *The Everyday and Extraordinary* whilst developing literacy skills.

Open Doors

Fri 9 Nov / 1.30pm–2.30pm / Free /
Open to all students in Years 8–13
Are you a young person with an interest in working in the arts? Hear from Towner staff, including our Director, to discover the roles involved in keeping a gallery running and the skills needed in this competitive sector. In partnership with East Sussex County Council and Skills East Sussex.

Draw Me In

Our Children and Young People's exhibition is back! This time we're extending the invitation to all groups in Sussex, within or beyond school, to create new work inspired by 12 artworks from our collection that have been selected by local teachers. Looking at drawing in all its forms – from light sculpture to ceramics and prints, the only requirement is that you are a group working with 0–21 year olds in the county. We'll launch the full programme in October and the exhibition will open on 4 April 2019 with a special afternoon event at the gallery. To find out more, receive your free resource pack and learn about the support available, please contact marina.castledine@townereastbourne.org.uk

Into Film Networking and Information Evening

Fri 5 Oct / 4.30pm–6.00pm / Free
Open to new and existing Into Film Club educators. Join us to learn more about the opportunities available to you and your school, through fun and exciting activities.

Adults

Art of Attachment

We are working in partnership with Oasis Brighton Project, supporting women in recovery at Café North in Eastbourne. The Art of Attachment is a programme of research reconsidering the theory of attachment through creative approaches. Working with our artist-in-residence Jenny Arran and using our exhibitions as a starting point, the group have created new visual and written work which will be on display in Brighton at Fabrica from 11–13 September and the Attenborough Centre for the Creative Arts on 18 October.

Open Ended

Tuesdays: 4 Sep, 2 Oct, 6 Nov, 4 Dec, 8 Jan / 10.00am–12 noon / £3 including refreshments (free for carers)

A monthly exploration of our collection and exhibitions to support those with memory loss.

Eastbourne Sketchers

Saturdays: 1 Sep, 6 Oct, 3 Nov, 1 Dec / 2.30pm–4.30pm / Free

Run by members of the community for anyone who sketches from real life. All abilities welcome.

Blue Monkey Network

Monthly events / £30 annual membership fee
Run by artists for artists, including talks, out of hours viewings and professional development.

Collective AiM

Thursdays / 10.00am–1.00pm / £2 per session
An artist collective open to existing members of Arts in Mind supporting mental health through creative expression.

Ink Paper + Print

Sat 13 & Sun 14 Oct / 11.00am–4.00pm / Free (fair) / Talks £6 / £5 / £4.50 members

The popular print and illustration fair returns with 55 exhibitors showcasing the very best of print, illustration and design, plus associated talks in our auditorium. inkpaperandprint.co.uk

Tours and Talks

Art Store Tours

Sundays: 2, 16 & 30 Sep, 14 & 28 Oct, 11 & 25 Nov, 9 & 23 Dec, 6 & 20 Jan / 12 noon / £6 (£5 conc. & members)

Get behind the scenes and enjoy a fascinating introduction to Towner's impressive art collection. From the original Victorian bequest to Eric Ravilious, no two tours are the same.

Perspectives on... Women Artists

Sun 28 Oct / 2.00pm / £6 (£5 conc. & members)

Towner's Terry Henson explores the work and lives of some of the many women artists in the Towner Collection, including Louisa Paris, Tirzah Garwood, Elizabeth Frink, Elizabeth Magill and Tacita Dean.

Towner Film

Towner's regular film programme continues every Thursday, Saturday and Sunday in our new auditorium cinema with its own café bar.

Highlights this season include a continuation of our popular art docs series, a Halloween screening of *The Shining*, family screenings and more from our queer film strand. We'll also welcome back CINECITY and Crossing the Screen for their respective film festivals in November. For full details visit townereastbourne.org.uk/film

Booking

Unless otherwise stated, we recommend booking tickets in advance for films and events online at townereastbourne.org.uk, by calling 01323 434670, or at the Welcome Desk. All talks last 1 hour unless otherwise stated. Event info is correct at time of going to print, check our website for up to date info and last minute additions.

Visitor Information

Free Admission

Tuesday – Sunday 10.00am–5.00pm
Bank Holiday Mondays 10.00am–5.00pm
Closed 24 – 26 December and 1 January

Towner Art Gallery
Devonshire Park
College Road
Eastbourne BN21 4JJ
+44 (0)1323 434670

towner@townereastbourne.org.uk
townereastbourne.org.uk
   @townergallery / @townerlearning

Mailing List

Receive information about our exhibitions, events and private views:
townereastbourne.org.uk/maillinglist










Travel and Parking

Walk/Cycle: We are a 10 min walk from Eastbourne station. Follow signs to Devonshire Park. Secure bike racks to the front of the building.

Bus: The 3 (local service) and 12A (Brighton) stop near the Winter Gardens on Carlisle Rd.

Train: Direct to Eastbourne from London (1hr 25 min), Brighton (35 min) and throughout the South East.

Car: College Rd car park is pay and display and has designated spaces for blue badge holders. For more info on getting to Towner car free from wherever you are visit townereastbourne.org.uk/carfree

Accessibility        
We have a lift to each floor and a wheelchair can be provided. See our website for more info or call us to discuss specific needs. Towner supports the  Access All Areas scheme.

Café

Urban Ground at Towner is open from 10am – 4.30pm serving top quality coffee, homemade cakes and light lunches.

Shop

Take home gifts, books, prints and stationery influenced by our collection and exhibitions, or shop online at shop.townereastbourne.org.uk

Membership

Support our work and enjoy invitations to private views, free entry to ticketed exhibitions and discounts in our café and shop. Join now at townereastbourne.org.uk/members

Legacies

Remembering Towner in your will is a wonderful way to make a lasting impact on future generations' enjoyment of the gallery. All gifts make a real difference and are free of inheritance tax. To discuss your wishes confidentially, email clare.dobson@townereastbourne.org.uk or call 01323 434663.

Volunteer

If you enjoy interacting with people and have an enthusiasm for art then we'd love to hear from you. Contact volunteer@townereastbourne.org.uk

Venue Hire

Our spaces, including the Towner Auditorium, are available to hire for daytime and evening events. To find out more, call 01323 434679 or email roomhire@townereastbourne.org.uk

Conservation Services

Undertaken by our fully accredited conservator Corinne Farmer, ACR. To book a free consultation email corinne.farmer@townereastbourne.org.uk